

EPOCO 1



SPECIFICATIONS: INTERNAL

The EPOCO 1 uses a rechargeable, maintenance free Ni-Cd battery. Configured with a universal voltage input 120-277V.

SPECIFICATIONS EXTERNAL

The EPOCO 1 is constructed from high quality thermoplastic. White finish is standard (black color optional). The adjustable 2.5W, 3 LED lamp module ensures emergency lighting performance, accurate positioning and reduced maintenance. The EPOCO 1 is designed for direct installation into a deep 4" x 4" square j-box. Easy field wiring & durable construction makes it suitable for recessed wall installations.

SPECIFICATIONS: MECHANICAL

The EPOCO 1 features a direct to j-box design that reduces installation time. Easy field wiring & durable construction is suitable for recessed wall mount installations. Emergency lighting head is mounted on a ratchet track for accurate positioning and locks into place. External test switch and monitor LED are standard.

PASSIVE INFRARED SENSOR

The EPOCO 1 comes with an option for a passive infrared sensor (PIR). The PIR will activate, when ambient light levels are lower than 1.3Fc. The sensor has an activation distance of 15 feet with a 125° degree field of view. Once the sensor detects motion the unit will turn on at full output for 15 minutes and then automatically turn off. If AC power is lost, the unit will automatically switch to emergency mode.

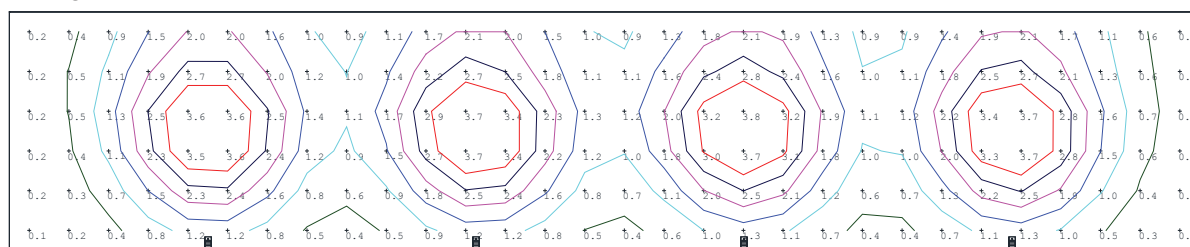
SPECIFICATIONS: ELECTRICAL

BATTERY: EPOCO 1 uses a rechargeable, maintenance free 4.8V 1800mAh Ni-MH battery that provides minimum emergency duration of 90 minutes. The recharge time of the battery is 24 hours. The maximum working temperature is +104°F (+40°C). The minimum working temperature is +50°F (+10°C).

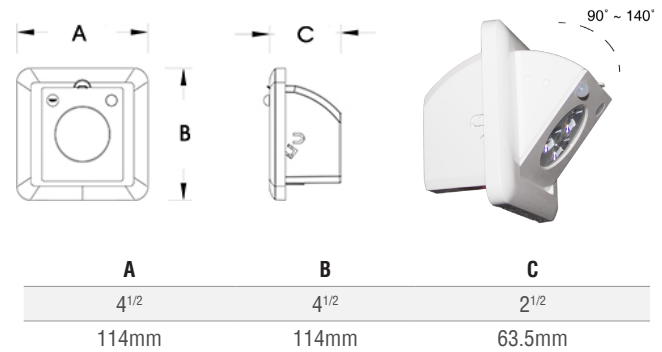
WARRANTY

The EPOCO 1 comes with a 3-year factory warranty. Deliberate damage, misuse, improper installation effectively cancel the warranty.

PERFORMANCE



DIMENSIONS



EMERGENCY MODULE

The EPOCO 1 comes standard with a single adjustable 2.5W, 3 LED module. Emergency lighting module is mounted on a ratchet track for accurate positioning and locks into place. The head adjusts from 90° ~ 140° (approximately).

- Mounting Height: 7 ft.
- Area: 6 ft. x 30 ft. x 10 ft.
- Spacing: 6.75 ft. on Center
- Average: 1.54Fc
- Max: 3.8Fc
- Min: 0.1Fc
- Avg/Min: 15.4Fc
- Max.Min: 38.0Fc

ORDERING LOGIC

Series	Options
EPOCO 1	B (black housing) S (sensor - PIR)