

EBLCSLEDSS Series

2', 3', 4' & 8' Slim Strips



Standard

The EBLCSLEDSS series is a group of 2', 3', 4', and 8' slim strip lights, which are designed as direct replacements for fluorescent strips. The EBLCSLEDSS series is designed to deliver general ambient lighting in a variety of indoor settings, including schools, offices, hospitals and stores, and is the perfect choice for both new construction and retrofits. This high-efficacy luminaire provides long-life and uniform illumination, as well as standard 0-10vdc dimming capability.

Features

- Available in 3500k (warm/neutral white), 4000k (neutral white) and 5000k (cool white) color temperatures.*
- Long-life LEDs provide 122,000 hours of operation with at least 70% of initial lumen output (L70).**
- EBLCSLEDSS2FT provides 2,582 luminaire lumens (129 lumens per watt, LPW) at 3500k; 2,592 luminaire lumens (130 LPW) at 4000k; and 2,613 luminaire lumens (131 LPW) at 5000k.*
- EBLCSLEDSS3FT provides 3,138 luminaire lumens (126 LPW) at 3500k; 3,154 luminaire lumens (126 LPW) at 4000k; and 3,186 luminaire lumens (127 LPW) at 5000k.*
- EBLCSLEDSS4FT provides 4,278 luminaire lumens (130 LPW) at 3500k; 4,313 luminaire lumens (131 LPW) at 4000k; and 4,382 luminaire lumens (133 LPW) at 5000k.*
- EBLCSLEDSS8FT provides 8,129 luminaire lumens (131 LPW) at 3500k; 8,131 luminaire lumens (131 LPW) at 4000k; and 8,135 luminaire lumens (131 LPW) at 5000k.*
- Uniform illumination with no visible LED pixelation.
- Universal 120-277 AC voltage (50-60Hz) is standard.
- 0-10vdc dimming capability is standard.
- Power factor > 0.90.
- Total harmonic distortion < 20%.
- Color rendering index > 80.
- Steel housing and acrylic lens.
- Easy installation in new construction or retrofit.

* Contact factory for other color temperatures and lumen packages.

** L70 hours are IES TM21-11 calculated hours.

Ordering Information

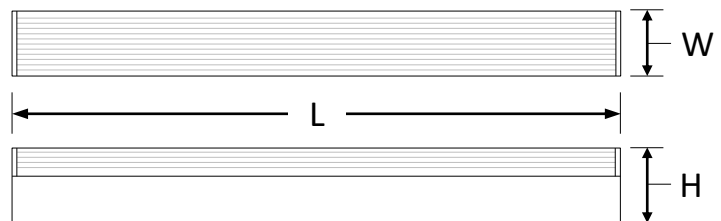
* Please note to select the size when filling out the model section



Warranty & Listings

- cULus approved for damp locations (-20 C to 50 C / -4 F to 122 F).
- DLC premium approved.
- Flicker-free per IEEE1789-2015 (low risk of adverse effects of flicker at 100% light output level).
- Complies with FCC Part 15, Class B (except for EBLCSLEDSS8FT, which has Class A compliance).
- Complies with IEEE C.62.41-1991, Class A input transient surge protection (2.5kV).
- Complies with RoHS (Restriction on Hazardous Substances) requirements.
- 5-year warranty of all electronics and housing.

Dimensions



	EBLCSLEDSS2FT	EBLCSLEDSS3FT	EBLCSLEDSS4FT	EBLCSLEDSS8FT
Length- L	22 1/4"	35"	47 3/8"	94 1/4"
Width - W	2 3/8"	2 3/8"	2 3/8"	2 3/8"
Height - H	2 3/4"	2 3/4"	2 3/4"	2 3/4"
Weight (lbs.)	2.4	3.1	3.7	7.5

Product Number: EBLCSLEDSS Series

M:

CT:

LL:

LW:

L/W:

Model	Color Temperature	Luminaire Lumens	Luminaire Watts	Lumens / Watt
EBLCSLEDSS2FT-20-35KMV-ET	3500k	2,582	20	129
EBLCSLEDSS2FT-20-4KMV-ET	4000k	2,592	20	130
EBLCSLEDSS2FT-20-5KMV-ET	5000k	2,613	20	131
EBLCSLEDSS3FT-25-35KMV-ET	3500k	3,138	25	126
EBLCSLEDSS3FT-25-4KMV-ET	4000k	3,154	25	126
EBLCSLEDSS3FT-25-5KMV-ET	5000k	3,186	25	127
EBLCSLEDSS4FT-35-35KMV-ET	3500k	4,278	33	130
EBLCSLEDSS4FT-35-4KMV-ET	4000k	4,313	33	131
EBLCSLEDSS4FT-35-5KMV-ET	5000k	4,382	33	133
EBLCSLEDSS8FT-65-35KMV-ET	3500k	8,129	62	131
EBLCSLEDSS8FT-65-4KMV-ET	4000k	8,131	62	131
EBLCSLEDSS8FT-65-5KMV-ET	5000k	8,135	62	131

07.2019

Electrical Data

Model	Color Temp.	CRI ¹	Luminaire Lumens	Luminaire Watts	Lumens Per Watt	Input Voltage ²	Input Current (A)			Power Factor	THD ³	L70 Hours ⁴
							120V	240V	277V			
EBLCSLEDSS2FT-20-35KMV-ET	3500k	> 80	2,582	20	129	120-277	0.17	0.08	0.07	> 90%	< 20%	122,000
EBLCSLEDSS2FT-20-4KMV-ET	4000k	> 80	2,592	20	130	120-277	0.17	0.08	0.07	> 90%	< 20%	122,000
EBLCSLEDSS2FT-20-5KMV-ET	5000k	> 80	2,613	20	131	120-277	0.17	0.08	0.07	> 90%	< 20%	122,000
EBLCSLEDSS3FT-25-35KMV-ET	3500k	> 80	3,138	25	126	120-277	0.21	0.10	0.09	> 90%	< 20%	122,000
EBLCSLEDSS3FT-25-4KMV-ET	4000k	> 80	3,154	25	126	120-277	0.21	0.10	0.09	> 90%	< 20%	122,000
EBLCSLEDSS3FT-25-5KMV-ET	5000k	> 80	3,186	25	127	120-277	0.21	0.10	0.09	> 90%	< 20%	122,000
EBLCSLEDSS4FT-35-35KMV-ET	3500k	> 80	4,278	33	130	120-277	0.28	0.14	0.12	> 90%	< 20%	122,000
EBLCSLEDSS4FT-35-4KMV-ET	4000k	> 80	4,313	33	131	120-277	0.28	0.14	0.12	> 90%	< 20%	122,000
EBLCSLEDSS4FT-35-5KMV-ET	5000k	> 80	4,382	33	133	120-277	0.28	0.14	0.12	> 90%	< 20%	122,000
EBLCSLEDSS8FT-65-35KMV-ET	3500k	> 80	8,129	62	131	120-277	0.52	0.26	0.22	> 90%	< 20%	122,000
EBLCSLEDSS8FT-65-4KMV-ET	4000k	> 80	8,131	62	131	120-277	0.52	0.26	0.22	> 90%	< 20%	122,000
EBLCSLEDSS8FT-65-5KMV-ET	5000k	> 80	8,135	62	131	120-277	0.52	0.26	0.22	> 90%	< 20%	122,000

¹ Color rendering index.

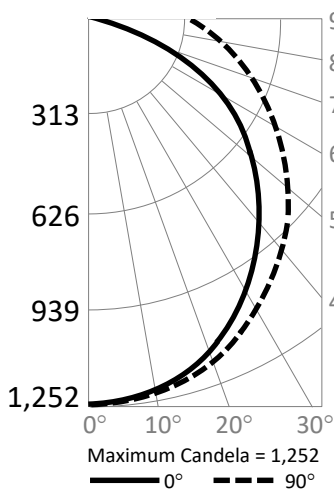
² All 50-60Hz.

³ Total harmonic distortion.

⁴ L70 refers to the number of hours at which lumen output declines to 70% of the initial level. L70 hours are IES TM21-11 calculated hours.

Photometric Data

Model: **EBLCSLEDSS4FT-35-5KMV-ET (4,382 lumens)**



Candlepower Summary

	0°	90°
0°	1,252	1,252
10°	1,224	1,236
20°	1,143	1,182
30°	1,015	1,096
40°	858	984
50°	679	852
60°	489	714
70°	292	575
80°	107	446
90°	0	334

Zonal Lumen Summary

Zone	Lumens	% Fixture
0° – 10°	130	3.0%
0° – 20°	502	11.5%
0° – 30°	1,064	24.3%
0° – 40°	1,743	39.8%
0° – 50°	2,456	56.0%
0° – 60°	3,124	71.3%
0° – 70°	3,685	84.1%
0° – 80°	4,104	93.7%
0° – 90°	4,382	100.0%
90° – 180°	0	0%
0° – 180°	4,382	100.0%

Cone of Light

