

ELEDH-AFK6

6" LED Architectural Frame-in Kit



DESCRIPTION

The ELEDH-AFK6 is a 6" LED Architectural frame-in Kit and is available with multiple Trim styles. Designed for use in non-insulated ceilings, Insulation material must be kept a minimum of 3" from fixture. Available with a 14W, 23W, 30W or 45W high efficacy LED engine and universal, dimmable drivers. The special optical diffuser produces high lumen transmission and even illumination. Suitable for Wet Locations.

DESIGN FEATURES

Mounting Ring

- 20-gauge CRS mounting ring, painted black. The 1-5/8" deep collar may be used with various ceiling material thicknesses.

LED Module & Trim

- Painted, extruded aluminum heat sink designed to facilitate efficient heat dissipation for superior thermal management and reliability.
- LED engine includes LED, heat sink and lens assembly.
- Heavy gauge aluminum reflector anodized in clear haze or white paint finishes. Multiple trim styles and finishes are available.

LED Driver

- Universal, 120~277V input, high efficacy drivers with dimming capability by ① a Triac 120V low voltage electronic dimmer switches or ② 0-10V, Triac & ELV dimmer switches.
- Drivers feature power factor >.90, THD <20% with integral thermal protection to sense over temperature or electrical issues.
- Driver mounts externally to the module to allow future replacement or upgrading if desired.
- Optional Lutron Hi-lume A-Series, LED drivers and EcoSystem 5-Series LED drivers are available. Lutron drivers provide flicker-free, smooth, continuous dimming down to 1% for Hi-lume and 5% for EcoSystem. (Contact factory for dimming system requirements)

Mounting Channel Bracket

- Commercial mounting kit provides up to 5" vertical adjustment and accommodates 1/2" EMT conduit. Optional HBC-24 bar hanger for T-bar grid or concealed spline ceiling are also available.

Junction Box

- Listed for through branch circuit wiring. (Max.8 No 12 AWG 90°C branch circuit conductors: 4 in, 4 out)
- (5) 1/2" knockouts with pry-out slots and (4) knockouts with Romex cable clamps.
- Ground wire provided on J-box.



Listing

- cETLus Wet Location
- ENERGY STAR
- California Title 24

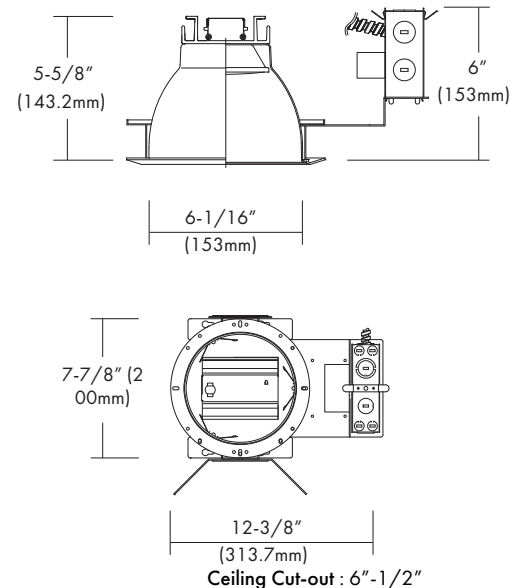
Options

- Emergency battery back-up : Available in mounted to fixture or remote adjacent to luminaire (consult with factory for space requirements).

Limited Warranty

- LED Module: 5 years/50K hours
- Product/Driver: 3 years

Dimensions



Housing	Watts	CRI	Color Temp.**	Color Temp.**	Trim	Reflector Finish**	Baffle Finish for ELEDT-R614 & R641	Optional Metal Trim Ring Finish
ELEDH-AFK6 =	14 = 14W	8 = 80	27 = 2700K	27 = 2700K	ELEDT-R64	HC = Haze Clear	WH = White	WH = White Plastic Trim Ring (Standard)
6", Non-IC,	23 = 23W	9 = 90	30 = 3000K	30 = 3000K	ELEDT-R614	WH = White	BK = Black	WMR = White Metal Ring
Architectural	30 = 30W		35 = 3500K	35 = 3500K	ELEDT-R641	Painted		SN = Satin Nickel
Frame-in Down	45 = 45W		3500K	3500K	ELEDT-R622			CH = Chrome
Light Kit			40 = 4000K	40 = 4000K	ELEDT-R636			SF = Polished Self-Flange (for Open or Wall Wash Reflectors ONLY)
			4000K	4000K	ELEDT-R640			
					ELEDT-R650			

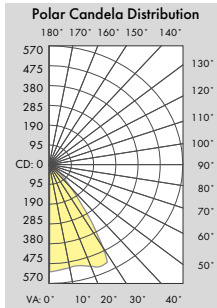
Job Name: _____

Type: _____

Part #: _____

Notes: _____

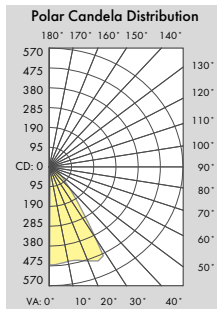
PHOTOMETRIC REPORT * Contact Factory for IES File



[ELEDH-AFK6-14-830+LEDT-R64]
Illuminance at a Distance

Center Beam FC	Beam Width
2.0ft: 138.2 fc	3.0 ft
4.0ft: 34.6 fc	6.0 ft
6.0ft: 15.4 fc	9.0 ft
8.0ft: 8.6 fc	12.0 ft
10.0ft: 5.5 fc	15.0 ft
12.0ft: 3.8 fc	18.0 ft

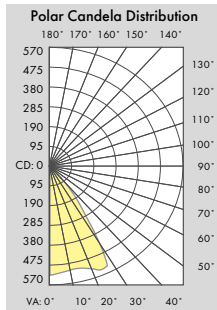
Beam Spread: 75°



[ELEDH-AFK6-23-830+LEDT-R64]
Illuminance at a Distance

Center Beam FC	Beam Width
2.0ft: 244.2 fc	3.0 ft
4.0ft: 61.0 fc	6.1 ft
6.0ft: 27.1 fc	9.1 ft
8.0ft: 15.3 fc	12.2 ft
10.0ft: 9.8 fc	15.2 ft
12.0ft: 6.8 fc	18.2 ft

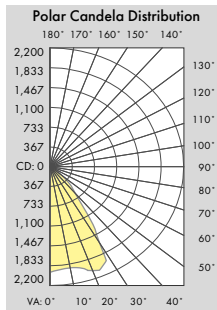
Beam Spread: 75°



[ELEDH-AFK6-30-830+LEDT-R64]
Illuminance at a Distance

Center Beam FC	Beam Width
2.0ft: 316.1 fc	2.4 ft
4.0ft: 79.0 fc	4.9 ft
6.0ft: 35.1 fc	7.3 ft
8.0ft: 19.8 fc	9.8 ft
10.0ft: 12.6 fc	12.2 ft
12.0ft: 8.8 fc	14.7 ft

Beam Spread: 75°



[ELEDH-AFK6-45-830+LEDT-R64]
Illuminance at a Distance

Center Beam FC	Beam Width
2.0ft: 485.7 fc	3.1 ft
4.0ft: 121.4 fc	6.3 ft
6.0ft: 54.0 fc	9.4 ft
8.0ft: 30.4 fc	12.5 ft
10.0ft: 19.4 fc	15.7 ft
12.0ft: 13.5 fc	18.8 ft

Beam Spread: 76.2°

Triac Approved Dimmers

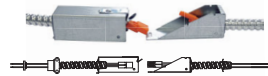
- * Lutron: NovaT (Ntelv 300 & 600)
Diva (Dvelv-300P & 303P)
- * Leviton: Acenti: Ate06-1Lw
- * Leviton Trimatron #705W (incandescent)

0-10V Approved Dimmers

- * Lutron: Nova® 0-10V : NTFTV
Diva®R 0-10V : DVTV
- * Leviton: Decora 0-10V : IP710DL

**Consult tech. service
or factory for additional
dimmers**

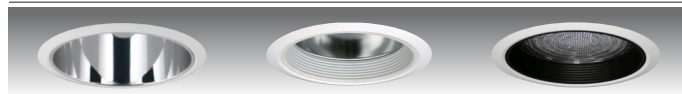
* Provided: Easy-quick connector case
(patent pending)



SPECIFICATION

Input Voltage	120-277VAC			
Wattage (+/-5%)	14W	23W	30W	45W
Lumen (+/-5%)	950	1,790	2,235	3,220
Efficacy (LPW)	67.9	77.8	74.5	71.5
Beam Angle	75°	75.5°	77°	76.2°
CRI (Typical)	80, 90			
CCT (Color +/-5%)	2700K, 3000K, 3500K, 4000K			
Dimming	0-10V, ELV & TRIAC Optional Lutron Drivers			
LED Module	5 yr/50K hr			
Environment	Wet Location			

TRIM



ELEDT-R64
Specular Open Reflector

ELEDT-R614
Baffle w / Reflector

ELEDT-R641
Baffle w / Regressed Lens



ELEDT-R622
Reflector w / Regressed Lens

ELEDT-R636
Wall Wash w / Reflector Plate

ELEDT-R640
Reflector w / Frosted Floating Lens



ELEDT-R650
Reflector with Frosted
3.5"
Center Hole Lens

* Wide beam reflector is standard. Also available narrow beam in reflector(consult with factory).

* All trims are rated for damp location and regressed lens trims are wet location listed.

* LEDT-R641 & LEDT-R622 are suitable and rated for shower location.